



INDUSTRIAL DAIRY PRODUCTION MANAGER

**“MANAGING TO IMPROVE PEOPLE,
PROCESSES & PROFIT”**

POWERED BY



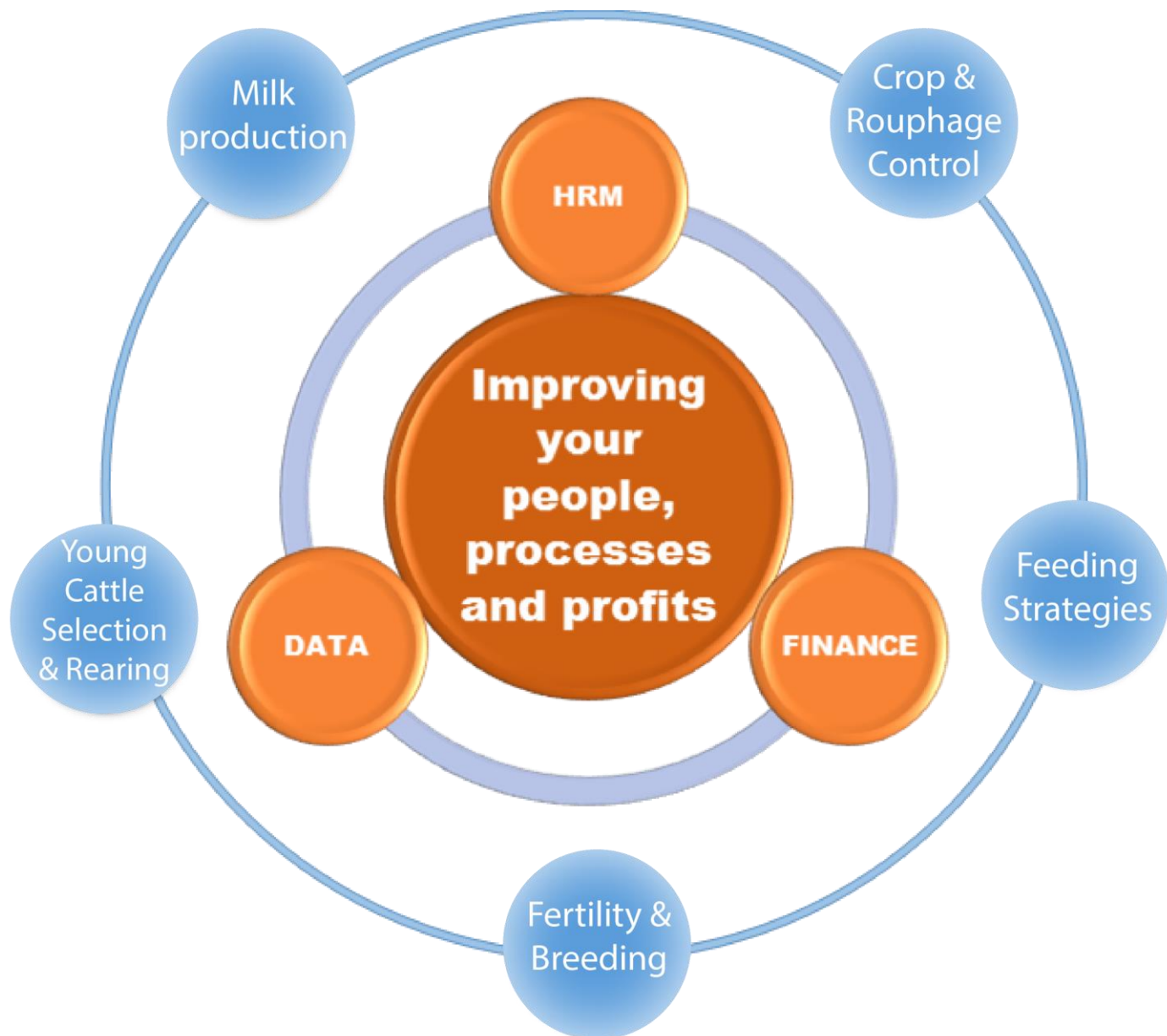
cahvilentum.nl/aeres



dairyfarmconsultants.com



globaldairyfarmers.com



INDUSTRIAL DAIRY PRODUCTION MANAGER **THE PEOPLE- AND PROCESS MANAGEMENT TRAINING**

The consortium of Aeres University of Applied Sciences, Cownexion and Global Dairy Farmers offers the elite program in the management of professional large-scale dairy farming in an international context for the following professional profile:

Managers are required to have excellent skills in the fields of human resource management and leadership on large dairy farms. These skills correspond to the aims of the owner and financial goals of the enterprise.

Participants of this elite program in dairy process- and people management will be able to put people, financial and animal or crop management into practice with a new set of skills to bring a farm to the next level.

THE PROGRAM

This one-year training is a hands-on elite management training divided into four phases and a concluding final phase. Each phase focusses on different technical topics which are **crucial to successfully and sustainably run an industrial dairy farm**. Key to this training is that all phases provide extensive tools to improve your **people, financial, communication and leadership skills**.

Each period kicks off with **two intensive weeks of masterclasses** by industrial farming experts, chief executives of the dairy industry and our dairy task-force coaches through **workshops, lectures, excursions and practical training**. Together with a coach you will define your **personal leadership goals** which you continuously analyze, adjust and improve. After this intensive training you will return for **8-10 weeks to your place of work** to put the acquired knowledge and skills into practice. On your own but not alone you will work on a phase-specific **case containing an improvement plan** for the farm, approved by farm management and to be executed and monitored successfully. You will achieve this with the remote **support of your coach** who has been in the same position as you are and with the help of your class mates.



Phase 1 Feeding livestock and strategies

- Feed / feed production
- Feeding strategies
- Management control and focus on Feeding profit



Phase 2 Fertility and breeding

- Control and management tools for Improvement of Fertility
- Management control translate Fertility control in in business value creation
- Cow signal concept



Phase 3 Forage Production

- Crop and Roughage production
- Control and management tools for improvement of Crop and roughage production.
- Management control translate Crop and roughage control in business value creation



Phase 4 Young cattle rearing

- Young stock
- Control and management tools for improvement of young stock selection and rearing.
- Management control translate young stock control in potential profit



Final Phase Presentation and Graduation

Personal Development | Feedback farm management, participants and experts | Excursions

WHAT DO WE EXPECT FROM YOU?

- Company requirement:
 - Currently working at a large dairy farm; or
 - Ambition to work on a large dairy farm
- Enthused and pro-active
- Basic knowledge dairy livestock
- Basic knowledge English language

QUALIFICATION

After a successful completion of the one-year elite program, participants receive a certificate which proves they are now an outstanding industrial dairy production manager and possess a set of skills that brings a farm and its people to the next level of efficiency, effectivity and a financial sustainable business.

THE MANAGEMENT TRAINING IS POWERED BY



Artex Barn Solutions is the inventor and manufacturer of the original free stall Comfort Zone. Since 1975 Artex, along with its Business and University partners, have studied cow comfort in the pasture to determine cow natural environment and translated that into cow comfort in the barn environment:



FOR MORE INFORMATION, PLEASE CONTACT

Ms. Yvonne Leenders | Manager Global Dairy Farmers

gdf-manager@globaldairyfarmers.com

